



# Cat<sup>®</sup> 305 CR

## MINI EXCAVATOR

### FEATURES:

The Cat<sup>®</sup> 305 CR Mini Excavator delivers power and performance in a compact size to help you work in a wide range of applications.

#### ALL DAY COMFORT

- Choose either a canopy or a sealed and pressurized cab which can be equipped with air conditioning, adjustable wrist rests, and a suspension seat to help keep you working comfortably all day long.

#### EASY TO OPERATE

- Controls are easy to use and the intuitive Next Generation LCD monitor provides easy to read machine information. An advanced touchscreen monitor can also be equipped as an upgrade option.

#### STICK STEER TRAVEL MODE

- Moving around the job site is even easier with the Cat Stick Steer option. Easily switch from traditional travel controls with levers and pedals to joystick controls to move the machine and to operate the blade. The benefit of less effort and improved control is in your hands!

#### BIG PERFORMANCE IN A COMPACT DESIGN

- Strong lift and dig performance helps you get the job done faster. The compact radius design lets you access and work in the tightest areas. Dozer float allows for easy clean up. An angle blade is also an option for finished grading and easier backfilling applications.

#### SAFETY ON THE JOB SITE

- Your safety is our top priority. The Cat mini excavator is designed to help keep you safe on the job. Courtesy work lights and a fluorescent retractable seat belt with optional seat belt reminder system are just a couple of the safety features we've built into the machine.

#### SIMPLE SERVICE FOR LESS DOWNTIME

- Maintenance is quick and easy on the Cat mini excavator. Routine check points are easy to access at ground level through the side doors.

#### LOWER OPERATING COSTS

- Equipped with features such as auto idle, auto engine shutdown, and efficient hydraulics with a variable displacement pump, the Cat mini excavator was designed with reducing your operating costs in mind.

#### UNMATCHED DEALER SUPPORT

- Your Cat dealer is here to help you reach your business goals. From providing equipment solutions to operator training to service needs and beyond, your Cat dealer is ready to help.



# 305 CR Mini Excavator

## Specifications

### Engine

|                                |            |                     |
|--------------------------------|------------|---------------------|
| Engine Model                   | C1.7 Turbo |                     |
| <b>Net Power @ 2,400 rpm</b>   |            |                     |
| ISO 9249, 80/1269/EEC          | 33.6 kW    | 45.0 hp             |
| <b>Gross Power @ 2,400 rpm</b> |            |                     |
| SAE J1995:2014                 | 36.1 kW    | 48.4 hp             |
| Bore                           | 84.0 mm    | 3.3 in              |
| Stroke                         | 100.0 mm   | 3.9 in              |
| Displacement                   | 1.662 L    | 101 in <sup>3</sup> |

- Advertised power is tested per the specified standard in effect at the time of manufacture.

### Weights

|  |         |           |
|--|---------|-----------|
| Minimum Operating Weight with Canopy*  | 4996 kg | 11,016 lb |
| Maximum Operating Weight with Canopy** | 5655 kg | 12,469 lb |
| Minimum Operating Weight with Cab*     | 5095 kg | 11,234 lb |
| Maximum Operating Weight with Cab**    | 5754 kg | 12,688 lb |

\*Minimum Weight is based on rubber tracks, operator, full fuel tank, standard stick, straight blade, no bucket and no extra counterweight.

\*\*Maximum Weight is based on steel tracks with pads, operator, full fuel tank, long stick, straight blade, extra counterweight and no bucket.

### Weight Increase from Minimum Configuration

|                        |        |        |
|------------------------|--------|--------|
| Counterweight          | 242 kg | 534 lb |
| Long Stick             | 34 kg  | 75 lb  |
| Steel Tracks with Pads | 375 kg | 827 lb |
| Angle Blade            | 102 kg | 225 lb |

### Travel System

|                                     |            |            |
|-------------------------------------|------------|------------|
| Travel Speed – High                 | 5.0 km/h   | 3.1 mph    |
| Travel Speed – Low                  | 2.8 km/h   | 1.7 mph    |
| Maximum Traction Force – High Speed | 24.7 kN    | 5,553 lbf  |
| Maximum Traction Force – Low Speed  | 50.5 kN    | 11,353 lbf |
| Ground Pressure – Minimum Weight    | 27.3 kPa   | 4.0 psi    |
| Ground Pressure – Maximum Weight    | 32.2 kPa   | 4.7 psi    |
| Gradeability (maximum)              | 30 degrees |            |

### Service Refill Capacities

|                  |        |          |
|------------------|--------|----------|
| Cooling System   | 11.0 L | 2.9 gal  |
| Engine Oil       | 6.0 L  | 1.6 gal  |
| Fuel Tank        | 68.0 L | 18.0 gal |
| Hydraulic Tank   | 60.0 L | 16.0 gal |
| Hydraulic System | 75.0 L | 20.0 gal |

### Hydraulic System

|  |           |             |
|--|-----------|-------------|
| Load Sensing Hydraulics with Variable Displacement Piston Pump |           |             |
| Pump Flow @ 2,400 rpm  | 133 L/min | 35 gal/min  |
| Operating Pressure – Equipment                                 | 265 bar   | 3,843 psi   |
| Operating Pressure – Travel                                    | 265 bar   | 3,843 psi   |
| Operating Pressure – Swing                                     | 200 bar   | 2,901 psi   |
| Auxiliary Circuit – Primary                                    |           |             |
| Flow*  | 80 L/min  | 21 gal/min  |
| Pressure*  | 265 bar   | 3,843 psi   |
| Auxiliary Circuit – Secondary                                  |           |             |
| Flow*  | 28 L/min  | 7.0 gal/min |
| Pressure*  | 265 bar   | 3,843 psi   |
| Digging Force – Stick (standard)                               | 28.3 kN   | 6,362 lbf   |
| Digging Force – Stick (long)                                   | 25.2 kN   | 5,665 lbf   |
| Digging Force – Bucket   | 49.2 kN   | 11,061 lbf  |

\*Flow and pressure are not combinable. Under load, as flow rises pressure goes down.

### Swing System

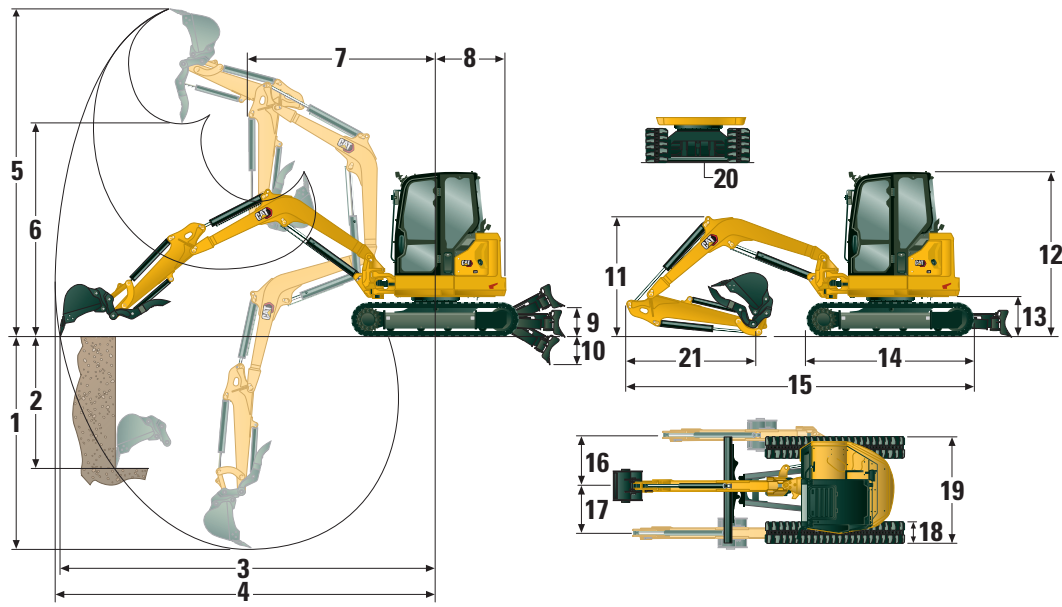
|                     |            |
|---------------------|------------|
| Machine Swing Speed | 9.0 rpm    |
| Boom Swing – Left   | 72 Degrees |
| Boom Swing – Right  | 50 Degrees |

### Blade

|                     |            |         |
|---------------------|------------|---------|
| Width (Straight)    | 1980 mm    | 78.0 in |
| Height (Straight)   | 390 mm     | 15.4 in |
| Width (Angle)       | 1980 mm    | 78.0 in |
| Height (Angle)      | 400 mm     | 15.7 in |
| Angle Blade – Left  | 25 degrees |         |
| Angle Blade – Right | 25 degrees |         |

### Certification – Cab and Canopy

|                                       |                        |
|---------------------------------------|------------------------|
| Roll Over Protective Structure (ROPS) | ISO 12117-2:2008       |
| Top Guard                             | ISO 10262:1998 Level I |



## Dimensions

|  | Standard Stick     | Long Stick         |
|--|--------------------|--------------------|
| <b>1</b> Dig Depth                         | 3420 mm (134.6 in) | 3670 mm (144.5 in) |
| <b>2</b> Vertical Wall                     | 2335 mm (91.9 in)  | 2560 mm (100.8 in) |
| <b>3</b> Maximum Reach at Ground Level     | 5590 mm (220.1 in) | 5835 mm (229.7 in) |
| <b>4</b> Maximum Reach                     | 5755 mm (226.6 in) | 5990 mm (235.8 in) |
| <b>5</b> Maximum Dig Height                | 5215 mm (205.3 in) | 5355 mm (210.8 in) |
| <b>6</b> Maximum Dump Clearance            | 3700 mm (145.7 in) | 3845 mm (151.4 in) |
| <b>7</b> Boom in Reach                     | 2570 mm (101.2 in) | 2580 mm (101.6 in) |
| <b>8</b> Tail Swing                        |                    |                    |
| without Counterweight                      | 1095 mm (43.1 in)  | 1095 mm (43.1 in)  |
| with Counterweight                         | 1200 mm (47.2 in)  | 1200 mm (47.2 in)  |
| <b>9</b> Maximum Blade Height              | 385 mm (15.2 in)   | 385 mm (15.2 in)   |
| <b>10</b> Maximum Blade Depth              | 595 mm (23.4 in)   | 595 mm (23.4 in)   |
| <b>11</b> Boom Height in Shipping Position | 1820 mm (71.7 in)  | 1895 mm (74.6 in)  |
| <b>12</b> Overall Shipping Height          | 2550 mm (100.4 in) | 2550 mm (100.4 in) |
| <b>13</b> Swing Bearing Height             | 619 mm (24.4 in)   | 619 mm (24.4 in)   |
| <b>14</b> Overall Undercarriage Length     | 2580 mm (101.6 in) | 2580 mm (101.6 in) |
| <b>15</b> Overall Shipping Length†         | 5305 mm (208.9 in) | 5340 mm (210.2 in) |
| <b>16</b> Boom Swing Right                 | 865 mm (34.1 in)   | 865 mm (34.1 in)   |
| <b>17</b> Boom Swing Left                  | 615 mm (24.2 in)   | 615 mm (24.2 in)   |
| <b>18</b> Track Belt/Shoe Width            | 400 mm (15.7 in)   | 400 mm (15.7 in)   |
| <b>19</b> Track Width                      | 1980 mm (78.0 in)  | 1980 mm (78.0 in)  |
| <b>20</b> Ground Clearance                 | 335 mm (13.2 in)   | 335 mm (13.2 in)   |
| <b>21</b> Stick Length                     | 1351 mm (53.2 in)  | 1601 mm (63.0 in)  |

†Overall Shipping Length depends on blade position during shipment.

# 305 CR Mini Excavator

## Cab

| Lift Capacities – Minimum Configuration |                |         | Lift Point Radius – 3 m (9.8 ft) |              |              | Lift Point Radius – 4.5 m (14.8 ft) |             |             | Lift Point Radius (Maximum) |               |               | m (ft)      |
|---|----------------|---------|----------------------------------|--------------|--------------|-------------------------------------|-------------|-------------|-----------------------------|---------------|---------------|-------------|
|   |                |         | Over Front                       |              |              | Over Front                          |             |             | Over Front                  |               |               |             |
|   |                |         | Blade Down                       | Blade Up     | Over Side    | Blade Down                          | Blade Up    | Over Side   | Blade Down                  | Blade Up      | Over Side     |             |
| 4.5 m (14.8 ft)                         | Standard Stick | kg (lb) |                                  |              |              |                                     |             |             |                             |               |               |             |
|   | Long Stick     | kg (lb) |                                  |              |              |                                     |             |             |                             |               |               |             |
| 3 m (9.8 ft)                            | Standard Stick | kg (lb) |                                  |              |              | *1206 (*2,659)                      | 908 (2,002) | 721 (1,590) | *949 (*2,093)               | *949 (*2,093) | *949 (*2,093) | 3.63 (11.9) |
|   | Long Stick     | kg (lb) |                                  |              |              | *1249 (*2,754)                      | 903 (1,991) | 714 (1,574) | *778 (*1,715)               | *778 (*1,715) | *778 (*1,715) | 4.55 (14.9) |
| 1.5 m (4.9 ft)                          | Standard Stick | kg (lb) | *2587 (*5,704)                   | 1641 (3,618) | 1257 (2,772) | *1615 (*3,561)                      | 882 (1,945) | 696 (1,535) | *975 (*2,150)               | 759 (1,674)   | 599 (1,321)   | 4.96 (16.3) |
|   | Long Stick     | kg (lb) | *2236 (*4,930)                   | 1641 (3,618) | 1255 (2,767) | *1508 (*3,325)                      | 868 (1,914) | 682 (1,504) | *794 (*1,751)               | *794 (*1,751) | *794 (*1,751) | 5.19 (17.0) |
| 0 m (0 ft)                              | Standard Stick | kg (lb) | *3260 (*7,188)                   | 1559 (3,438) | 1183 (2,609) | *1825 (*4,024)                      | 855 (1,885) | 670 (1,477) | *1190 (*2,624)              | 787 (1,735)   | 619 (1,365)   | 4.77 (15.6) |
|   | Long Stick     | kg (lb) | *3193 (*7,041)                   | 1534 (3,382) | 1158 (2,553) | *1781 (*3,927)                      | 833 (1,837) | 648 (1,429) | *953 (*2,101)               | 711 (1,568)   | 555 (1,224)   | 5.02 (16.5) |

Minimum Weight includes cab, rubber tracks, no counterweight, operator, full fuel tank and straight blade.

| Lift Capacities – Maximum Configuration |                |         | Lift Point Radius – 3 m (9.8 ft) |              |              | Lift Point Radius – 4.5 m (14.8 ft) |                |             | Lift Point Radius (Maximum) |               |               | m (ft)      |
|---|----------------|---------|----------------------------------|--------------|--------------|-------------------------------------|----------------|-------------|-----------------------------|---------------|---------------|-------------|
|   |                |         | Over Front                       |              |              | Over Front                          |                |             | Over Front                  |               |               |             |
|   |                |         | Blade Down                       | Blade Up     | Over Side    | Blade Down                          | Blade Up       | Over Side   | Blade Down                  | Blade Up      | Over Side     |             |
| 4.5 m (14.8 ft)                         | Standard Stick | kg (lb) |                                  |              |              |                                     |                |             |                             |               |               |             |
|   | Long Stick     | kg (lb) |                                  |              |              |                                     |                |             |                             |               |               |             |
| 3 m (9.8 ft)                            | Standard Stick | kg (lb) |                                  |              |              | *1206 (*2,659)                      | *1206 (*2,659) | 911 (2,009) | *949 (*2,093)               | *949 (*2,093) | *949 (*2,093) | 3.63 (11.9) |
|   | Long Stick     | kg (lb) |                                  |              |              | *1249 (*2,754)                      | *1249 (*2,754) | 904 (1,993) | *778 (*1,715)               | *778 (*1,715) | *778 (*1,715) | 4.81 (15.8) |
| 1.5 m (4.9 ft)                          | Standard Stick | kg (lb) | *2587 (*5,704)                   | 1953 (4,306) | 1579 (3,482) | *1615 (*3,561)                      | 1059 (2,335)   | 886 (1,954) | *975 (*2,150)               | *975 (*2,150) | *975 (*2,150) | 4.96 (16.3) |
|   | Long Stick     | kg (lb) | *2236 (*4,930)                   | 1953 (4,306) | 1577 (3,477) | *1508 (*3,325)                      | 1045 (2,304)   | 872 (1,923) | *794 (*1,751)               | *794 (*1,751) | *794 (*1,751) | 5.19 (17.0) |
| 0 m (0 ft)                              | Standard Stick | kg (lb) | *3260 (*7,188)                   | 1871 (4,126) | 1505 (3,319) | *1825 (*4,024)                      | 1032 (2,276)   | 860 (1,896) | *1190 (*2,624)              | 951 (2,097)   | 795 (1,783)   | 4.77 (15.6) |
|   | Long Stick     | kg (lb) | *3193 (*7,041)                   | 1847 (4,073) | 1480 (3,263) | *1781 (*3,927)                      | 1010 (2,227)   | 838 (1,848) | *953 (*2,101)               | *953 (*2,101) | *953 (*2,101) | 5.02 (16.5) |

Maximum Weight includes cab, steel tracks with pads, counterweight, operator, full fuel tank and angle blade.

## Canopy

| Lift Capacities – Minimum Configuration |                |         | Lift Point Radius – 3 m (9.8 ft) |              |              | Lift Point Radius – 4.5 m (14.8 ft) |             |             | Lift Point Radius (Maximum) |               |               | m (ft)      |
|---|----------------|---------|----------------------------------|--------------|--------------|-------------------------------------|-------------|-------------|-----------------------------|---------------|---------------|-------------|
|   |                |         | Over Front                       |              |              | Over Front                          |             |             | Over Front                  |               |               |             |
|   |                |         | Blade Down                       | Blade Up     | Over Side    | Blade Down                          | Blade Up    | Over Side   | Blade Down                  | Blade Up      | Over Side     |             |
| 4.5 m (14.8 ft)                         | Standard Stick | kg (lb) |                                  |              |              |                                     |             |             |                             |               |               |             |
|   | Long Stick     | kg (lb) |                                  |              |              |                                     |             |             |                             |               |               |             |
| 3 m (9.8 ft)                            | Standard Stick | kg (lb) |                                  |              |              | *1206 (*2,659)                      | 887 (1,956) | 705 (1,555) | *949 (*2,093)               | *949 (*2,093) | *949 (*2,093) | 3.63 (11.9) |
|   | Long Stick     | kg (lb) |                                  |              |              | *1249 (*2,754)                      | 881 (1,943) | 698 (1,539) | *778 (*1,715)               | *778 (*1,715) | *778 (*1,715) | 4.81 (15.8) |
| 1.5 m (4.9 ft)                          | Standard Stick | kg (lb) | *2587 (*5,704)                   | 1603 (3,535) | 1230 (2,712) | *1615 (*3,561)                      | 861 (1,899) | 680 (1,499) | *975 (*2,150)               | 740 (1,632)   | 585 (1,290)   | 4.96 (16.3) |
|   | Long Stick     | kg (lb) | *2236 (*4,930)                   | 1603 (3,535) | 1228 (2,708) | *1508 (*3,325)                      | 847 (1,868) | 665 (1,466) | *794 (*1,751)               | 672 (1,482)   | 528 (1,164)   | 5.19 (17.0) |
| 0 m (0 ft)                              | Standard Stick | kg (lb) | *3260 (*7,188)                   | 1521 (3,354) | 1155 (2,547) | *1825 (*4,024)                      | 833 (1,837) | 654 (1,442) | *1190 (*2,624)              | 767 (1,691)   | 603 (1,330)   | 4.77 (15.6) |
|   | Long Stick     | kg (lb) | *3193 (*7,041)                   | 1497 (3,301) | 1131 (2,494) | *1781 (*3,927)                      | 812 (1,790) | 632 (1,394) | *953 (*2,101)               | 692 (1,526)   | 541 (1,193)   | 5.02 (16.5) |

Minimum Weight includes canopy, rubber tracks, no counterweight, operator, full fuel tank and straight blade.

| Lift Capacities – Maximum Configuration |                |         | Lift Point Radius – 3 m (9.8 ft) |              |              | Lift Point Radius – 4.5 m (14.8 ft) |                |             | Lift Point Radius (Maximum) |               |               | m (ft)      |
|---|----------------|---------|----------------------------------|--------------|--------------|-------------------------------------|----------------|-------------|-----------------------------|---------------|---------------|-------------|
|   |                |         | Over Front                       |              |              | Over Front                          |                |             | Over Front                  |               |               |             |
|   |                |         | Blade Down                       | Blade Up     | Over Side    | Blade Down                          | Blade Up       | Over Side   | Blade Down                  | Blade Up      | Over Side     |             |
| 4.5 m (14.8 ft)                         | Standard Stick | kg (lb) |                                  |              |              |                                     |                |             |                             |               |               |             |
|   | Long Stick     | kg (lb) |                                  |              |              |                                     |                |             |                             |               |               |             |
| 3 m (9.8 ft)                            | Standard Stick | kg (lb) |                                  |              |              | *1206 (*2,659)                      | *1206 (*2,659) | 895 (1,973) | *949 (*2,093)               | *949 (*2,093) | *949 (*2,093) | 3.63 (11.9) |
|   | Long Stick     | kg (lb) |                                  |              |              | *1249 (*2,754)                      | 1059 (2,335)   | 888 (1,958) | *778 (*1,715)               | *778 (*1,715) | *778 (*1,715) | 4.81 (15.8) |
| 1.5 m (4.9 ft)                          | Standard Stick | kg (lb) | *2587 (*5,704)                   | 1915 (4,223) | 1552 (3,422) | *1615 (*3,561)                      | 1038 (2,289)   | 870 (1,918) | *975 (*2,150)               | *975 (*2,150) | *975 (*2,150) | 4.96 (16.3) |
|   | Long Stick     | kg (lb) | *2236 (*4,930)                   | 1915 (4,223) | 1550 (3,418) | *1508 (*3,325)                      | 1024 (2,258)   | 855 (1,885) | *794 (*1,751)               | *794 (*1,751) | *794 (*1,751) | 5.19 (17.0) |
| 0 m (0 ft)                              | Standard Stick | kg (lb) | *3260 (*7,188)                   | 1833 (4,042) | 1477 (3,257) | *1825 (*4,024)                      | 1010 (2,227)   | 844 (1,861) | *1190 (*2,624)              | 931 (2,053)   | 780 (1,720)   | 4.77 (15.6) |
|   | Long Stick     | kg (lb) | *3193 (*7,041)                   | 1809 (3,989) | 1453 (3,204) | *1781 (*3,927)                      | 989 (2,181)    | 822 (1,813) | *953 (*2,101)               | *953 (*2,101) | *953 (*2,101) | 5.02 (16.5) |

Maximum Weight includes canopy, steel tracks with pads, counterweight, operator, full fuel tank and angle blade.

\*The above loads are in compliance with hydraulic excavator lift capacity rating standard ISO 10567:2007 and they do not exceed 87% of hydraulic lifting capacity or 75% of tipping capacity. The excavator bucket weight is not included on this chart.

## Standard and Optional Equipment

Standard and optional equipment may vary. Consult your Cat dealer for details.

|  | Standard | Optional |  | Standard | Optional |
|--|----------|----------|--|----------|----------|
| <b>ENGINE</b>  |          |          | <b>OPERATOR ENVIRONMENT (continued)</b>                                      |          |          |
| Cat® C1.7 Turbo Engine (U.S. EPA Tier 4 Final)                 | ✓        |          | Coat Hook  | ✓        |          |
| Automatic Engine Idle  | ✓        |          | Cup Holder   | ✓        |          |
| Automatic Engine Shutdown                                      | ✓        |          | Storage Pocket   | ✓        |          |
| Automatic Two Speed Travel                                     | ✓        |          | Skylight   | ✓        |          |
| Fuel Water Separator   | ✓        |          | Mounting Bosses for Front  | ✓        |          |
| Power on Demand<br>(not available in all regions)              | ✓        |          | Signaling/Warning Horn   | ✓        |          |
| Variable Displacement Piston Pump                              | ✓        |          | Interior Light (Cab only)  | ✓        |          |
| Load Sensing/Flow Sharing Hydraulics                           | ✓        |          | Boom Light, Halogen (not available<br>in all regions)                        | ✓        |          |
| <b>HYDRAULICS</b>  |          |          | LED Front Lights   |          | ✓        |
| Smart Tech Electronic Pump                                     | ✓        |          | LED Front and Rear Lights  |          | ✓        |
| Accumulator  | ✓        |          | LED Boom Light   |          | ✓        |
| Automatic Swing Brake  | ✓        |          | Utility Space for Mobile Phone   | ✓        |          |
| Auxiliary Hydraulic Lines                                      | ✓        |          | Mirrors, Left, Right and Rear  |          | ✓        |
| One and Two Way Auxiliary Flow                                 | ✓        |          | Camera   |          | ✓        |
| Continuous Auxiliary Flow                                      | ✓        |          | Radio – Bluetooth®, Auxiliary, Microphone,<br>USB (charging only) (Cab only) |          | ✓        |
| Auxiliary Line Quick Disconnects                               | ✓        |          | Cat Grade with Advanced 2D   |          | ✓        |
| <b>OPERATOR ENVIRONMENT</b>                                    |          |          | Cat Grade with 3D  |          | ✓        |
| Canopy or Cab  | ✓        |          | Next Generation Color LCD Monitor (IP66)                                     | ✓        |          |
| Cab with Air Conditioning                                      |          | ✓        | – Fuel Level and Coolant Temperature Gauges                                  | ✓        |          |
| Cab with Heater  |          | ✓        | – Maintenance and Machine Monitoring   | ✓        |          |
| ROPS – ISO 12117-2:2008  | ✓        |          | – Performance and Machine Adjustments  | ✓        |          |
| TOPS – ISO 12117:1997  | ✓        |          | – Numeric Security Code  | ✓        |          |
| Stick Steer Mode   | ✓        |          | – Multiple Languages   | ✓        |          |
| Travel Cruise Control  | ✓        |          | – Hour Meter with Wake Up Switch   | ✓        |          |
| Control Pattern Changer<br>(optional in some regions)          | ✓        |          | – Jog Dial (cab only)  | ✓        |          |
| Adjustable Wrist Rests   | ✓        |          | Next Generation Advanced Monitor   |          | ✓        |
| Washable Floor Mat   | ✓        |          | – Touch Screen   |          | ✓        |
| Travel Pedals and Hand Levers                                  | ✓        |          | – Site Reference System  |          | ✓        |
| No Travel Pedals and Hand Levers<br>(optional in some regions) |          | ✓        | – High Definition Camera Capable<br>(IP68 and IP69K)                         |          | ✓        |
| Machine Security   | ✓        |          | – Numeric Security Code  |          | ✓        |
| Standard Key with Pass Code                                    | ✓        |          |  |          |          |
| Push to Start with Key Fob/Pass Code                           |          | ✓        |  |          |          |
| Fabric Suspension Seat (Cab only)                              | ✓        |          |  |          |          |
| Vinyl Suspension Seat (Canopy only)                            | ✓        |          |  |          |          |
| Hydraulic Lockout – All Controls                               | ✓        |          |  |          |          |
| Retractable High Visibility Seat Belt<br>(75 mm/3 in)          | ✓        |          |  |          |          |
| Seat Belt Reminder System                                      |          | ✓        |  |          |          |

(continued on next page)

# 305 CR Mini Excavator

## Standard and Optional Equipment *(continued)*

Standard and optional equipment may vary. Consult your Cat dealer for details.

|  | Standard | Optional |  | Standard | Optional |
|--|----------|----------|--|----------|----------|
| <b>UNDERCARRIAGE</b>   |          |          | <b>GUARDING</b>  |          |          |
| Rubber Belt (400 mm/15.7 in)   | ✓        |          | Roll Over Protective Structure (ROPS)<br>ISO 12117-2:2008      | ✓        |          |
| Steel Track (400 mm/15.7 in)   |          | ✓        | Top Guard ISO 10262:1998 (Level I)                             | ✓        |          |
| Steel Track with Rubber Pads   |          | ✓        | Top Guard ISO 10262:1998 (Level II) (Cab)                      |          | ✓        |
| Dozer Straight Blade   | ✓        |          | Front Guard (Mesh) ISO 10262:1998<br>(Level I) (Cab)           |          | ✓        |
| Dozer Blade Float  | ✓        |          | Front Guard (Heavy Duty) ISO 10262:1998<br>(Level II) (Cab)    |          | ✓        |
| Angle Blade  |          | ✓        | Front Guard (Mesh) ISO 10262:1998<br>(Level I) (Canopy)        |          | ✓        |
| Tie Downs on Track Frame   | ✓        |          | Front Guard (Heavy Duty) ISO 10262:1998<br>(Level II) (Canopy) |          | ✓        |
| <b>BOOM, STICK AND LINKAGES</b>  |          |          | <b>OTHER</b>   |          |          |
| One Piece Boom (2716 mm/106.9 in)                                      | ✓        |          | Bio Oil Capable  |          | ✓        |
| Standard Stick (1351 mm/53.2 in)                                       | ✓        |          | Eco Drain  |          | ✓        |
| Long Stick (1601 mm/63.0 in)   |          | ✓        | Water Jacket Heater  |          | ✓        |
| Front Shovel Capable   | ✓        |          | Counterweight (242 kg/534 lb)                                  |          | ✓        |
| Pin-On   | ✓        |          |  |          |          |
| Dual Lock Manual Coupler   |          | ✓        |  |          |          |
| Hydraulic Coupler  |          | ✓        |  |          |          |
| Thumb Ready  | ✓        |          |  |          |          |
| Certified Lifting Eye  | ✓        |          |  |          |          |
| Attachments including Couplers, Thumbs,<br>Buckets, Augers and Hammers |          | ✓        |  |          |          |
| 2nd Auxiliary Hydraulic Lines  |          | ✓        |  |          |          |
| Bucket Divert Lines  |          | ✓        |  |          |          |
| Boom Lowering Check Valve  |          | ✓        |  |          |          |
| Stick Lowering Check Valve   |          | ✓        |  |          |          |
| Hydraulic Quick Coupler Lines  |          | ✓        |  |          |          |
| <b>ELECTRICAL</b>  |          |          |  |          |          |
| 12 Volt Battery  | ✓        |          |  |          |          |
| Software (machine and monitor)   | ✓        |          |  |          |          |
| Maintenance Free Battery   | ✓        |          |  |          |          |
| Battery Disconnect   | ✓        |          |  |          |          |
| 12 Volt Power Socket   | ✓        |          |  |          |          |
| Product Link™ PL243 (regulations apply)                                |          | ✓        |  |          |          |
| Product Link PLE643 (regulations apply)                                |          | ✓        |  |          |          |
| Travel Alarm (optional in some regions)                                | ✓        |          |  |          |          |

The following information applies to the machine at the time of final manufacture as configured for sale in the regions covered in this document. The content of this declaration is valid as of the date issued; however, content related to machine features and specifications are subject to change without notice. For additional information, please see the machine's Operation and Maintenance Manual.

For more information on sustainability in action and our progress, please visit <https://www.caterpillar.com/en/company/sustainability>.

## Engine

- The Cat® C1.7 Turbo engine meets U.S. EPA Tier 4 Final and EU Stage V emission standards.
- Cat diesel engines are required to use ULSD (ultra-low sulfur diesel fuel with 15 ppm of sulfur or less) or ULSD blended with the following lower-carbon intensity fuels up to:
  - ✓ 20% biodiesel FAME (fatty acid methyl ester)\*
  - ✓ 100% renewable diesel, HVO (hydrogenated vegetable oil) and GTL (gas-to-liquid) fuels
 Refer to guidelines for successful application. Please consult your Cat dealer or "Caterpillar Machine Fluids Recommendations" (SEBU6250) for details.  
*\*Engines with no aftertreatment devices can use higher blends, up to 100% biodiesel (for use of blends higher than 20% biodiesel, consult your Cat dealer).*

## Air Conditioning System

- The air conditioning system on this machine contains the fluorinated greenhouse gas refrigerant R134a (Global Warming Potential = 1430). The system contains 1.0 kg (2.2 lb) of refrigerant which has a CO<sub>2</sub> equivalent of 1.430 metric tonnes (1.576 tons).

## Paint

- Based on best available knowledge, the maximum allowable concentration, measured in parts per million (PPM), of the following heavy metals in paint are:
  - Barium < 0.01%
  - Cadmium < 0.01%
  - Chromium < 0.01%
  - Lead < 0.01%

## Sound Performance

Operator Sound Pressure 72 dB(A) (ISO 6396:2008)\*

Average Exterior Sound Pressure 99 dB(A) (ISO 6395:2008)\*\*

\*The declared dynamic operator sound pressure levels per ISO 6396:2008. The measurements were conducted with the cab doors and windows closed.

\*\*The labeled sound power level for the CE marked configurations when measured according to the test procedure and conditions specified in 2000/14/EC.

## Oils and Fluids

- Caterpillar factory fills with ethylene glycol coolants. Cat Diesel Engine Antifreeze/Coolant (DEAC) and Cat Extended Life Coolant (ELC) can be recycled. Consult your Cat dealer for more information.
- Cat Bio HYDO™ Advanced is an EU Ecolabel approved biodegradable hydraulic oil.
- Additional fluids are likely to be present, please consult the Operations and Maintenance Manual or the Application and Installation guide for complete fluid recommendations and maintenance intervals.

## Features and Technology

- The following features and technology may contribute to fuel savings and/or carbon reduction. Features may vary. Consult your Cat dealer for details.
  - Advanced hydraulic systems balance power and efficiency
  - Power On Demand provides full time efficiency and power when you need it, and is transparent to the operator
  - Auto idle and auto engine shutdown
  - Extended maintenance intervals reduce fluid and filter consumption
  - Remote Flash and Remote Troubleshoot (if equipped)
  - Mini Hydraulic Excavator Ease of Use features improve operator efficiency minimizing fuel consumption (if equipped)
  - Cat Grade with Advanced 2D and 3D improves operator efficiency minimizing fuel consumption (if equipped)

## Recycling

- The materials included in machines are categorized as below with approximate weight percentage. Because of variations of product configurations, the following values in the table may vary.

| Material Type            | Weight Percentage |
|--------------------------|-------------------|
| Steel                    | 65.52%            |
| Iron                     | 21.19%            |
| Rubber                   | 3.50%             |
| Mixed Metal              | 2.20%             |
| Other                    | 1.89%             |
| Nonferrous Metal         | 1.81%             |
| Plastic                  | 1.55%             |
| Fluid                    | 1.47%             |
| Mixed-Metal and Nonmetal | 0.85%             |
| Mixed Nonmetallic        | 0.01%             |
| Uncategorized            | 0.00%             |
| Total                    | 100.00%           |

- A machine with higher recyclability rate will ensure more efficient usage of valuable natural resources and enhance End-of-Life value of the product. According to ISO 16714 (Earth-moving machinery – Recyclability and recoverability – Terminology and calculation method), recyclability rate is defined as percentage by mass (mass fraction in percent) of the new machine potentially able to be recycled, reused or both.

All parts in the bill of material are first evaluated by component type based on a list of components defined by the ISO 16714 and Japan CEMA (Construction Equipment Manufacturers Association) standards. Remaining parts are further evaluated for recyclability based on material type.

Because of variations of product configurations, the following values in the table may vary.

Recyclability – 96%

# 305 CR Mini Excavator

---

For more complete information on Cat products, dealer services, and industry solutions, visit us on the web at [www.cat.com](http://www.cat.com)

© 2023 Caterpillar  
All rights reserved

Materials and specifications are subject to change without notice. Featured machines in photos may include additional equipment. See your Cat dealer for available options.

CAT, CATERPILLAR, LET'S DO THE WORK, their respective logos, "Caterpillar Corporate Yellow," the "Power Edge" and Cat "Modern Hex" trade dress as well as corporate and product identity used herein, are trademarks of Caterpillar and may not be used without permission.

AEHQ8376-02 (03-2023)

Replaces AEHQ8376-01

Build Number: 07A

(North America)

